

MXE

INSTRUCTION MANUAL



STEP ONE: Battery Installation

Your safe uses a 3.7V 18650 rechargeable lithium-ion with a flat top. A minimum 2000 mAh capacity is required, however 2200 mAh or higher can be used to increase operation time.

- 1 To get started, insert one of your backup keys into the keyhole at the front of the safe (see Figure A). Push key in and rotate the key 90 degrees clockwise to open the safe.
- 2 Remove the interior padding. Locate the battery compartment door on the inside of the safe directly behind the '4' key on the keypad (see Figure B).
- 3 Remove the battery cover by pressing down on the tab near the top of the cover.
- 4 Insert the battery (included in accessory box) into the battery compartment. Note that your Vaultek® safe automatically detects the polarity of the battery and can be installed in either direction.

TIP! For easy removal make sure to place the pull string over the battery before replacing the cover.

- 5 When the battery is inserted you will hear a short welcome tone and the keypad will light up.
- 6 Once you hear the tone and see the keypad light up, replace the battery cover. You are now ready to program your safe.

IMPORTANT Your Vaultek® safe will automatically lock when you fully close the lid.

FIGURE A

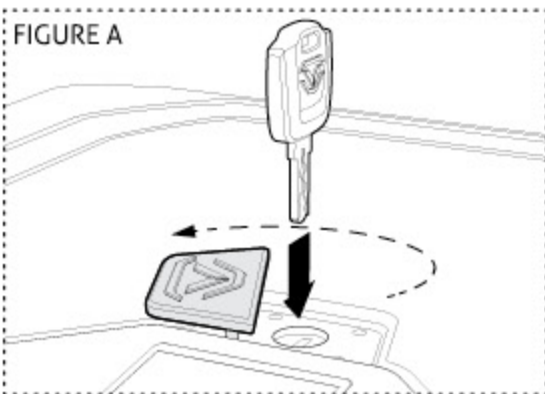
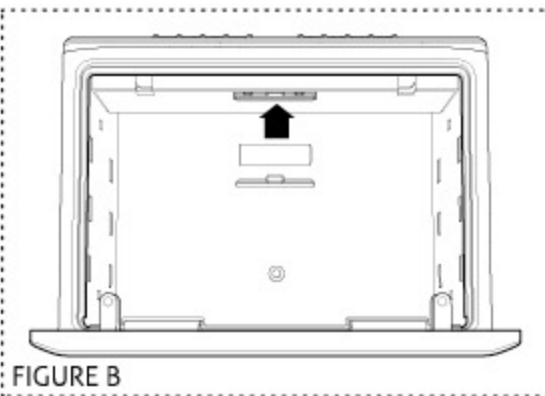


FIGURE B



STEP TWO: Master Code Programming

First time users should change the default code as soon as possible to prevent unauthorized access to your safe, so it should be kept confidential.

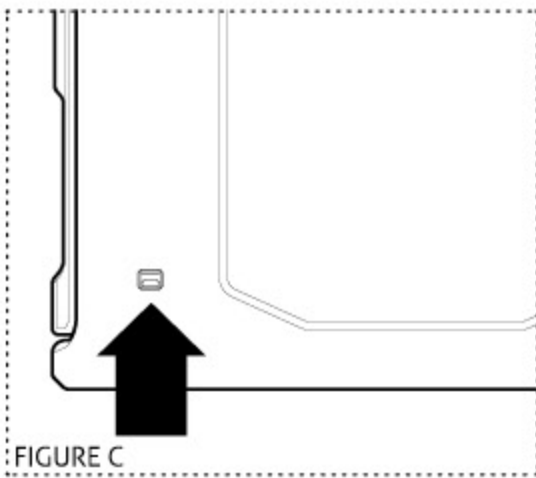
TIP: Code Requirements

- Your code can be a minimum of 4 and a maximum of 8 digits. We recommend a code 6 to 8 digits in length using at least one of each key to make it more difficult for someone to guess your code. For your security, the safe will time out and sleep for 4 minutes if 6 incorrect entries are made.
- Two keys cannot be pressed simultaneously.
- Programming a new code will overwrite your previous code.

- 1 Open the safe. (The default master code is 1-2-3-4). With the safe open, press and hold the '1' key then the "PROGRAM" button together (3 seconds) (Figure C) until the LCD screen prompts you to enter your new code.
- 2 Enter your NEW master code.
- 3 Press and hold the '1' key then the "PROGRAM" button a second time (3 seconds) until the LCD screen prompts you to re-enter your new code.
- 4 Enter your NEW master code a second time.
- 5 Press and hold the '1' key then the "PROGRAM" button together a third time (3 seconds) until the safe beeps and LCD screen confirms that the code has been reset.

If you make a mistake and the new code will not work, simply start over with step 1.

FIGURE C



STEP THREE: Product Registration



Vaultek® strongly encourages you to register your safe as soon as you receive it. Registration provides many benefits including technical support and ordering replacement keys should you misplace them. Your Vaultek® safe has a unique product number on the inside of the battery door and a 4-digit ID number engraved on the keys. You will need these numbers to register your safe.

- 1 Locate your product number. It is printed on the first page of this user manual and on the inside of the battery door (Figure D/E).
- 2 Find your 4-digit ID number engraved on the keys (Figure F).
- 3 Please visit the Vaultek® website at vaulteksafe.com and click Support/Product Registration.
- 4 Enter the required information in the form and click submit.

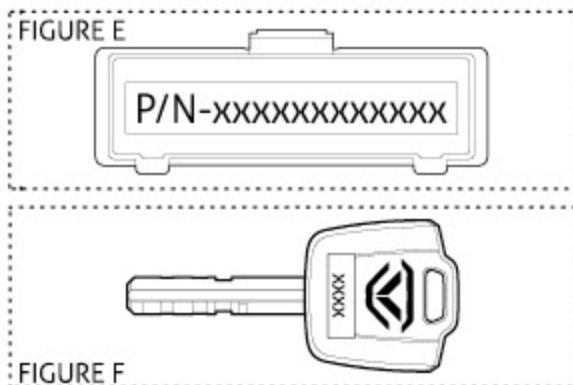
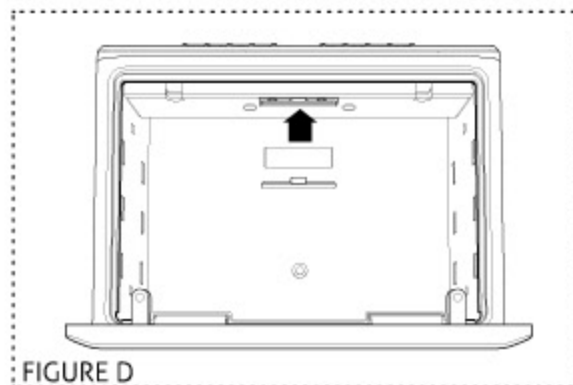


Table of Contents

Product Overview	01 / 04
Introduction / Warnings	05 / 06
Battery Operation / Battery Maintenance	07 / 09
Battery Installation	07
Charging the Battery	08
Master Code Programming	10
Hot Keys	11
Tamper Detection	11
Toggle Sound	11
Toggle Travel Mode	11
View Battery Status	11
Toggle Alert of Manual Unlock	11
Toggle Open Door Alarm	11
Securing Your Safe	12
Modular Interior	12
Adjust Interior Shelf Height	12
Product Registration	13
Customer Support / Warranty	14

Box Contents

Vaultek® Safe	AC Power Adapter and Charging Cable	Hardware Mounting Kit
18650 Rechargeable Lithium-ion Battery	Twin Pistol Rack	Backup Keys (2)

GET STARTED

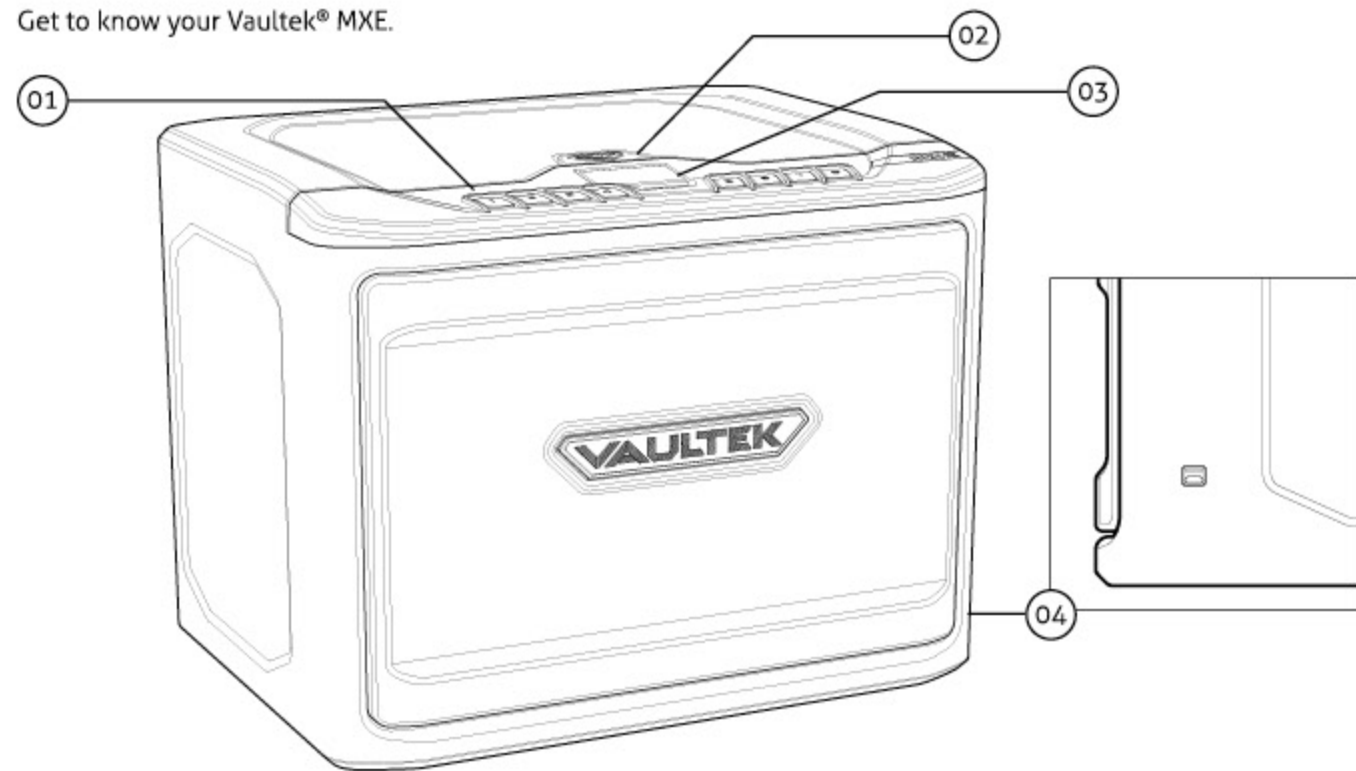
[VAULTEKSAFE.COM/
MXSERIES-SUPPORT](http://VAULTEKSAFE.COM/MXSERIES-SUPPORT)

ONLINE TUTORIALS
Quick setup help.

Product Overview

Continue on next page for more information about MXE.

Get to know your Vaultek® MXE.



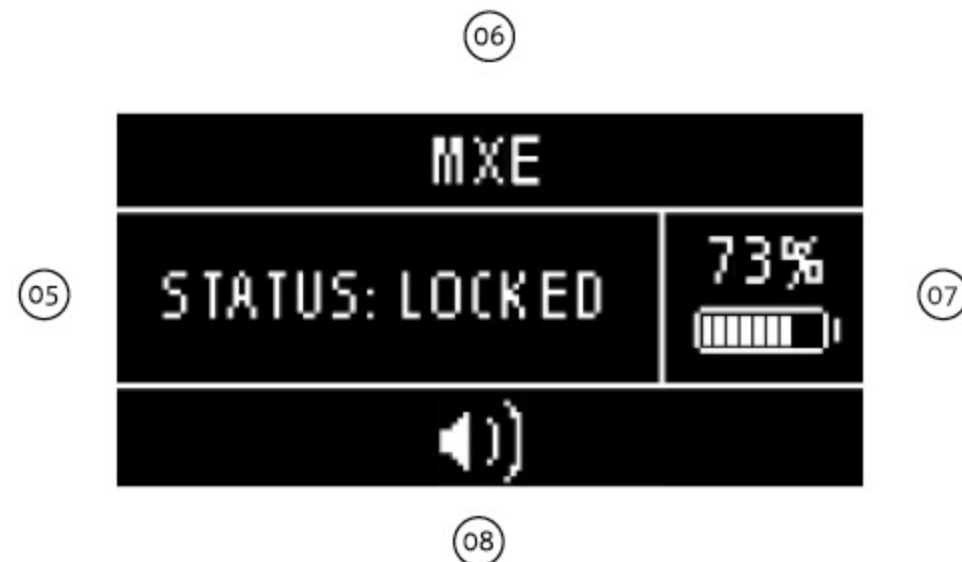
01. Numeric Keypad

02. Silicone Key Hole Cover

03. LCD Screen

04. Micro-USB Charging Port

LCD Screen Format



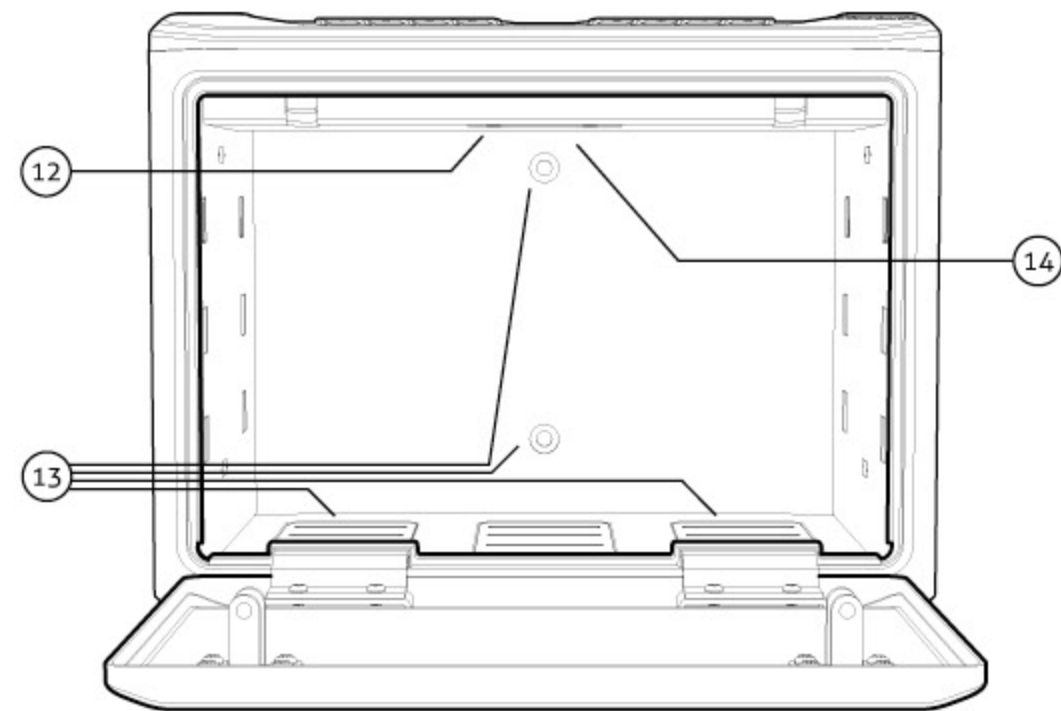
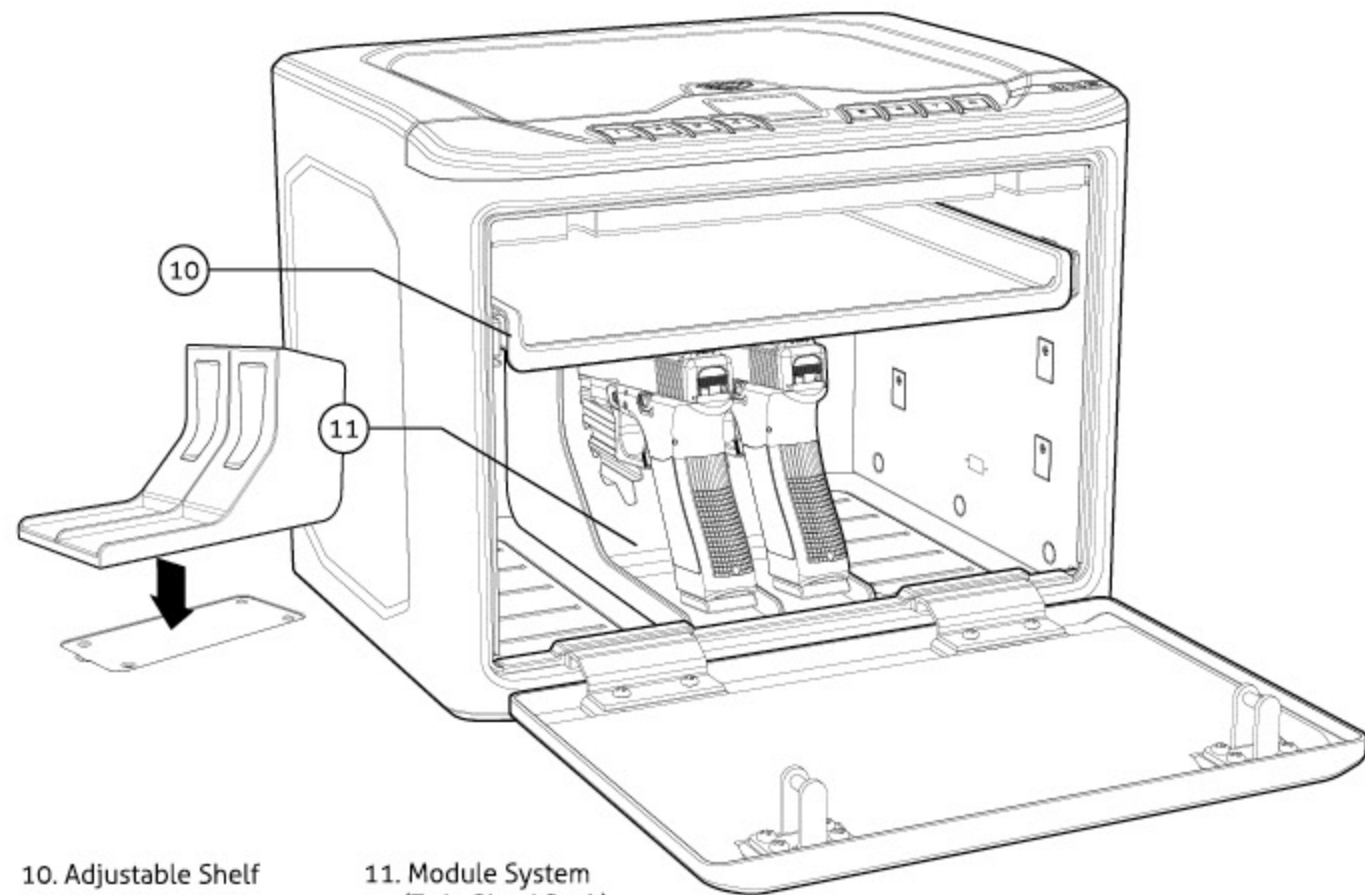
05. Safe Status

06. Safe Name

07. Battery Level

08. Sound

Product Overview Continued



Introduction

The Vaultek® MXE is a PIN access safe. Its solid structure and penetration resistant design makes it ideal for storing valuables such as firearms, jewelry, cash, and other personal items. Powered by a rechargeable lithium-ion battery, the safe combines high security with complete access control.

Secure Access: How to open your Vaultek® Safe.

Keypad: The numeric keypad responds quickly for rapid access and has a built-in proximity sensor that lights up when your hand brushes against the safe. See page 10 for more information.

Backup Keys: Two keys are included in the event the rechargeable battery dies.

Secure Defense: How your Vaultek® Safe keeps people out.

Anti-Impact Latches: Built to withstand forceful impacts and heavy slams.

No External Access Points: A combination of interior mounted hinges and extended anti-pry reinforcement bars help prevent unwanted tools from attempting to break the safe open.

Security Sleep Mode: Activates when six (6) consecutive incorrect keypad entries are entered and does not accept any entries for four minutes. If a button is pressed during this mode, all of the numbers will flash RED and the alarm beeps. A backup key may be used to open the safe.

Mounting: MXE comes pre-drilled on the bottom and back of the safe for mounting using the including mounting screws. See page 12 for more information.

Warnings

To prevent damage to your Vaultek® unit or injury to yourself or to others, read the following safety precautions before using this unit.

DO NOT PLACE OR STORE THE BACKUP KEYS INSIDE THE SAFE AT ANY TIME. IF THE BATTERY FAILS, YOU WILL BE UNABLE TO OPEN THE SAFE.

DO NOT expose to extreme heat or cold. Battery power may be affected.

DO NOT store loaded guns in this unit. Firearms are serious in nature and must be handled with respect. Store responsibly.

ALWAYS check to make sure door has latched when closing; lid requires a firm press and locks automatically.

DISCLAIMERS:

NEITHER SELLER NOR MANUFACTURER SHALL BE LIABLE FOR UNAUTHORIZED ACCESS, ANY INJURY, LOSS OR DAMAGE TO PERSONAL PROPERTY DIRECT OR CONSEQUENTIAL, ARISING OUT OF THE USE OF, OR THE INABILITY TO USE THE VAULTEK® SAFE.

THE USER SHALL DETERMINE THE SUITABILITY OF THE VAULTEK® SAFE BEFORE THE INTENDED USE AND USER ASSUMES ALL RISK AND LIABILITY WHATSOEVER IN CONNECTION THEREWITH. VAULTEK® SAFES ARE NOT INTENDED TO PROTECT AGAINST ENVIRONMENTAL HAZARDS INCLUDING FIRE AND WATER.

Be sure and follow all local and state firearm laws.

DO NOT operate a firearm without proper training and experience.

TUTORIALS ONLINE AT [VAULTEKSAFE.COM/MXSERIES-SUPPORT](https://www.vaulteksafe.com/mxseries-support)

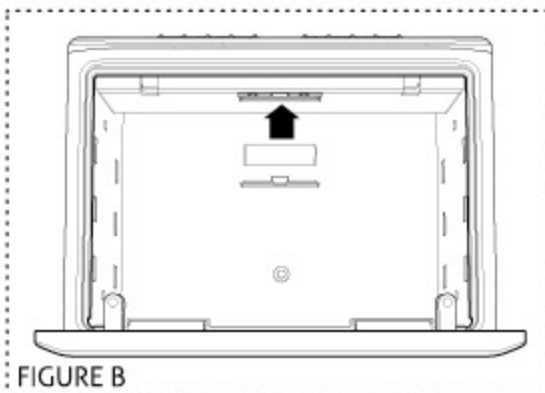
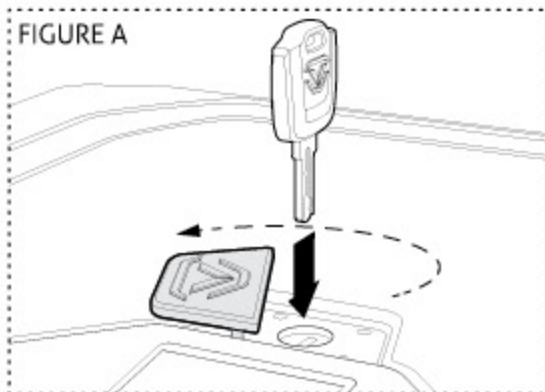
Battery Operation

Your safe uses a 3.7V 18650 rechargeable lithium-ion with a flat top. A minimum 2000 mAh capacity is required, however 2200 mAh or higher can be used to increase operation time.

Battery Installation

- 1 To get started, insert one of your backup keys into the keyhole at the top of the safe (see Figure A). Push key in and rotate the key 90 degrees clockwise to open the safe.
 - 2 Locate the battery compartment inside the safe beneath the control panel (see Figure B).
 - 3 Remove the battery cover by pressing down on the tab near the top of the cover.
 - 4 Insert the 18650 rechargeable lithium-ion battery (included in accessory box) into the battery compartment. Note that your Vaultek® safe automatically detects the polarity of the battery and can be installed in either direction.
- TIP!** For easy removal make sure to place the pull string over the battery before replacing the cover.
- 5 When the battery is inserted you will hear a short welcome tone and the keypad will light up.
 - 6 Once you hear the tone replace the battery cover. You are now ready to program your safe.

IMPORTANT Your Vaultek® safe will automatically lock when you fully close the lid.



Continue on next page for more information about the battery.

Charging the Battery

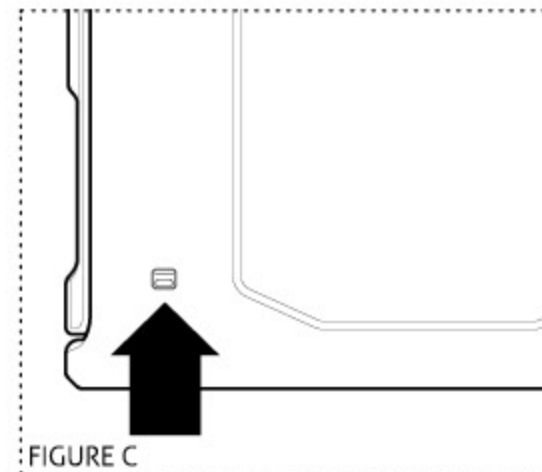
Your Vaultek® safe is powered by a rechargeable lithium-ion battery and comes with a charging kit which includes an AC power adapter and a micro-USB cable. Safe and micro-USB cable can be used with all international power adapters. Under normal usage, a fully charged battery can last 2 months.

Due to powerful features on the MXE it is recommended to keep the safe plugged in.

- 1 **To recharge the safe**, plug the micro-USB cable into the micro-USB receiving jack located on the lower right side of the safe (Figure C) and connect to a standard USB port or wall outlet using the AC power adapter. Approximate recharge time is 2.5 hours. When charging the LED light above the micro-USB jack (Figure C) will be on.
- 2 The LCD screen will indicate the power status.

Charging TIPS

- | | |
|--|--|
| A After installing the battery, use the charging kit provided to charge the unit 100%. | D A specially designed Vaultek Powerpack is available as a separate accessory to extend operation time. |
| B The charging kit can also function as an external power supply, which means you can open your safe even when the battery is depleted. | E The adapter used to charge the battery should output 5V/2000mA or above when using charging cable. |
| C Leaving your safe plugged in continually will not harm the safe or battery. | See the FAQ section for additional information about the battery. |



Battery Maintenance

Testing the Battery Power

To check the battery level, press and hold '6' and '8' key together on the keypad for 3 seconds. The LCD screen will indicate the battery level.

Low Battery Warning

If the LED on the control panel blinks RED several times and you hear several rapid beeps when opening the safe, your battery level is critical low and your safe needs to be recharged immediately.

Soft Reset TIP

In the event the battery dies or a soft reset is performed (battery removal and installation) the safe will restore default settings for sound, and Alert of Manual Unlock feature. These settings will need to be readjusted, however the master code will not be affected.

IMPORTANT

Use a 3.7V 18650 rechargeable lithium-ion battery with a flat top. A minimum 2000 mAh capacity is required, however 2200 mAh or higher can be used to increase operation time.

A high capacity battery upgrade is available as an accessory through our website.

The adapter used to charge the battery should output 5V/2000mA or above when using micro-USB.

TUTORIALS ONLINE AT VAULTEKSAFE.COM/MXSERIES-SUPPORT

Master Code Programming

First time users should change the default code as soon as possible to prevent unauthorized access to your safe.

TIP: Code Requirements

- Your code can be a minimum of 4 and a maximum of 8 digits. We recommend a code 6 to 8 digits in length using at least one of each key to make it more difficult for someone to guess your code. For your security, the safe will time out and sleep for 4 minutes if 6 incorrect entries are made.
- Two keys cannot be pressed simultaneously.
- Programming a new code will overwrite your previous code.

- 1 Open the safe. With the safe open, press and hold the '1' key then the "PROGRAM" button together (3 seconds)(Figure D) until the LCD screen prompts you to enter your new code.
- 2 Enter your NEW master code.
- 3 Press and hold the '1' key then the "PROGRAM" button together a second time (3 seconds) until the LCD screen prompts you to re-enter your new code.
- 4 Enter your NEW master code a second time.
- 5 Press and hold the '1' key then the "PROGRAM" button together a third time (3 seconds) until the safe beeps and the LCD screen confirms the code has been reset.

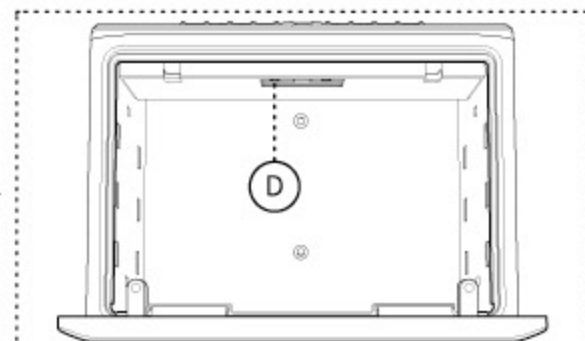


FIGURE D

If you make a mistake and the new code will not work, simply start over with step 1.

TUTORIALS ONLINE AT VAULTEKSAFE.COM/MXSERIES-SUPPORT

Hot Keys

Tamper Detection

Press and hold '2' and '4'



To check for tampering press and hold keys '2' and '4' together for 3 seconds. The screen will indicate TAMPERING or CLEARED. You can reset the tamper detection by opening the safe through one of the authorized entry points.

Toggle Sound

Press and hold '1' and '3'



To toggle the sound ON/OFF press and hold keys '1' and '3' together for 3 seconds. The screen will indicate the sound is ON and beep or the screen will indicate OFF and not beep.

Toggle Travel Mode

Press and hold '1' and '8'



Save battery life by disabling the proximity sensor, keypad, and status bar. To toggle travel mode ON/OFF press and hold keys '1' and '8' together for 3 seconds. The screen will indicate ENABLED or DISABLED.

View Battery Status

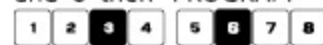
Press and hold '6' and '8'



To check the battery level press and hold keys '6' and '8' together for 3 seconds. The screen will indicate the battery level. See pages 08 to 09 for more information.

Toggle Alert of Manual

Unlock Press and hold '3' and '6' then "PROGRAM"



If the Alert of Unlock is on, and someone opens the safe with either the key or by picking the lock, the keypad will start flashing. To toggle Alert Unlock press and hold keys '3' and '6' then "PROGRAM" button together for 3 seconds. The keypad will flash GREEN indicating enabled or RED indicating disabled. If ON and activated it can only be cleared by entering master code. Default is OFF.

Toggle Open Door

Alarm Press and hold '3' and '5' and "PROGRAM"



Your safe features an open door alarm that will sound when the safe door is left open for more than 8 minutes. By default, this alarm is ON. To toggle off press and hold keys '3' and '5' and "PROGRAM" together (3 seconds). The screen will indicate ON or OFF.

Securing Your Safe

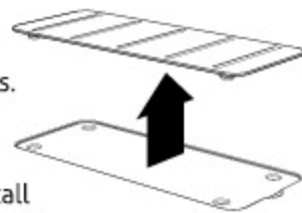
Your Vaultek® safe can be secured via the included mounting screws to a flat surface using the pre-drilled holes on the bottom and back of the safe.

TIP: Make sure you have enough clearance for the lid to open properly before mounting the safe.

- 1 Position the safe on a flat surface where you want to mount it.
- 2 Use a pencil to mark the holes for drilling.

TIP: Remove the covers to access bottom mounting holes.

- 3 Drill pilot holes.
- 4 Position safe in place and install screws through safe into pilot holes. Tighten screws.



Modular Interior

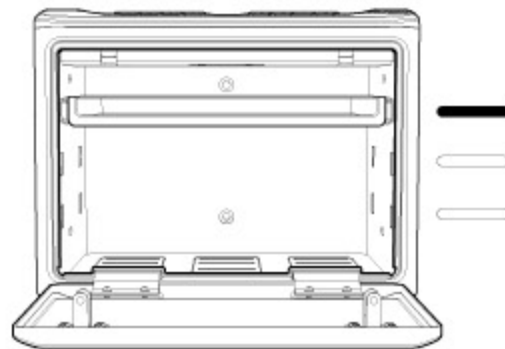
Your MX Series safe features a customizable interior system with a height adjustable pull out shelf and drop in modules to help with storage and organization.

Adjust Interior Shelf Height

- 1 Lift the shelf vertically to remove from mounting brackets.
- 2 Remove the screw/mounting brackets from the sidewalls and reinstall at the desired height.
- 3 Place shelf back onto the mounting brackets and press down firmly to install.

Drop In Modules

A twin pistol rack is included and can be placed wherever there is an insert cover. Remove the covers to access the slots to attach each module, and snap into place. A range of different modules are available for purchase.



Product Registration

Vaultek® strongly encourages you to register your safe as soon as you receive it. Registration provides many benefits including technical support and ordering replacement keys should you misplace them. Your Vaultek® safe has a unique product number on the inside of the battery door and a 4-digit ID number engraved on the keys. You will need these numbers to register your safe.

- 1 Locate your product number. It is printed on the first page of this user manual and on the back of the battery door (Figure E/F).
- 2 Find your 4-digit ID number engraved on the keys (Figure G).
- 3 Please visit the Vaultek® website at vaulteksafe.com and click Support/Product Registration.
- 4 Enter the required information in the form and click submit.

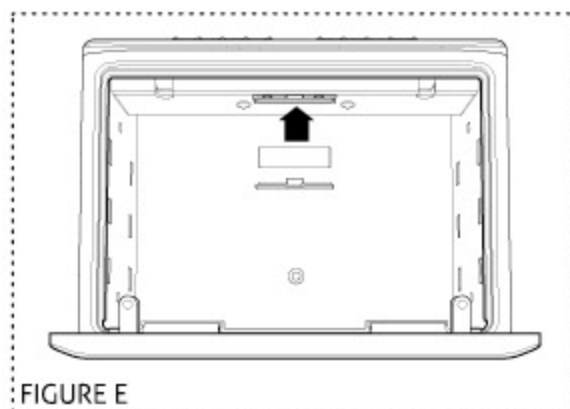


FIGURE E

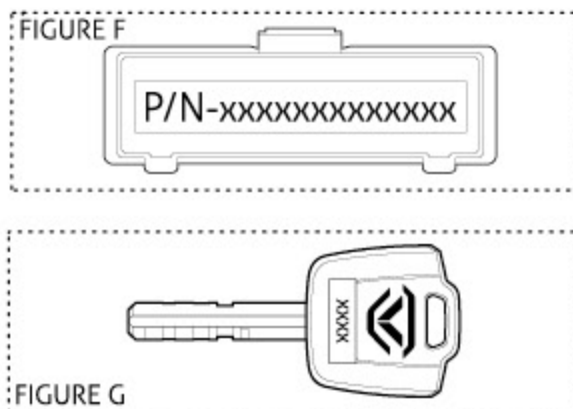


FIGURE F

FIGURE G

TUTORIALS ONLINE AT VAULTEKSAFE.COM/MXSERIES-SUPPORT

Customer Support / Warranty

Customer Support

If you have a problem with your Vaultek® safe that is not answered in the FAQ section of this manual, we encourage you to visit www.vaulteksafe.com/mxseries-support.

Limited Warranty (Terms and Conditions)

Vaultek® is committed to building high quality products and will make every effort to ensure our products are free from any defects. We guarantee your safe will be free of defects in materials or workmanship for a period of three years from the date of original purchase from an authorized dealer. This warranty does not cover abuse, misuse, use in any manner for which is not designed, neglect, modification, damage inadvertently caused by the owner, accidents, and/or tampering.

If you encounter a problem with your Vaultek® safe, contact our support team online at vaulteksafe.com/support for assistance. If your safe is determined to be defective and we are responsible for the cause we will have it repaired at our expense, or we will send a new replacement at no cost to you. You will be required to return your existing unit as well as all included accessories to Vaultek® prior to replacement of the defective unit along with your verification of purchase.

If it is determined your safe needs to be returned our customer support team will provide you with a Return Merchandise Authorization (RMA) number. Please have the following information available when contacting us:

- Purchaser's name and mailing address, email address, and phone number.
- Copy of receipt or online order number (if purchased directly from us or Amazon)
- Authorized dealer name (if applicable)
- Detailed description of problem

NEITHER SELLER NOR MANUFACTURER SHALL BE LIABLE FOR ANY INJURY, LOSS OR DAMAGE, DIRECT OR CONSEQUENTIAL, ARISING OUT OF THE USE OF, OR THE INABILITY TO USE THE VAULTEK® SAFE.

FCC

This device has been evaluated to meet general RF exposure requirement, and this device can be used in portable exposure condition without restriction.

FCC statements:

This device complies with part 15 of the FCC rules. Operation is subject to the following two conditions: (1) this device may not cause harmful interference, and (2) this device must accept any interference received, including interference that may cause undesired operation.

NOTE: The manufacturer is not responsible for any radio or TV interference caused by unauthorized modifications or changes to this equipment. Such modifications or changes could void the user's authority to operate the equipment.

NOTE: This equipment has been tested and found to comply with the limits for a Class B digital device, pursuant to part 15 of the FCC Rules. These limits are designed to provide reasonable protection against harmful interference in a residential installation. This equipment generates uses and can radiate radio frequency energy and, if not installed and used in accordance with the instructions, may cause harmful interference to radio communications. However, there is no guarantee that interference will not occur in a particular installation. If this equipment does cause harmful interference to radio or television reception, which can be determined by turning the equipment off and on, the user is encouraged to try to correct the interference by one or more of the following measures:

- Reorient or relocate the receiving antenna.
- Increase the separation between the equipment and receiver.
- Connect the equipment into an outlet on a circuit different from that to which the receiver is connected.
- Consult the dealer or an experienced radio/TV technician for help.

TUTORIALS ONLINE AT VAULTEKSAFE.COM/MXSERIES-SUPPORT



VAULTEK®

37 North Orange Ave. Suite 800B Orlando, FL 32801

VAULTEKSAFE.COM