



# DS2e

## SMART STATION

Instructions + Quick Setup Guide

## QUICK SETUP GUIDE

Follow these steps to get your safe up and running.

### Step 1: Plug in the safe and install two AAA batteries.

This safe needs to be plugged in continuously for normal function and two AAA batteries need to be installed. These batteries provide backup power in the event of a power outage and will provide power for about 9 months to access to the safe.

### Step 2: Program the master code.

Change the default code as soon as possible to prevent unauthorized access to your safe.

**Important!** Before entering your master code you need to wake the safe by tapping the touch strip so all the keys light up RED.

### Step 3: Set the clock.

The clock needs to be set from the safe. Refer to "Set the Clock" portion of this manual on the back for details.

### Step 4: Register the safe.

Registration provides many benefits including three year warranty, technical support, and ordering replacement keys should you misplace them.

## WARNINGS

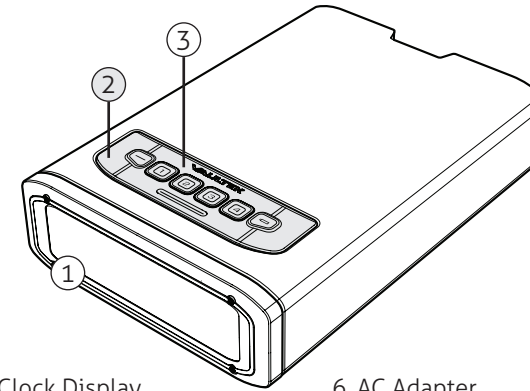
To prevent damage to your Vaultek unit or injury to yourself or to others, read the following safety precautions before using this unit.

- **Before using this safe**, inspect the safe to make sure the door latches properly. You can perform a quick test by using the included mechanical key. Open and close the safe 5 times. Do not use the product if you notice any problem or defect. Please email Vaultek customer support at support@vaulteksafe.com.
- **Always check to make sure the safe door has latched when closing.** This safe uses a rugged latch system. When closing press firmly near the center of the front edge. Drawer requires a firm press and will lock automatically when closed properly.
- **Change the default code as soon as possible to prevent unauthorized access to your safe.**
- **DO NOT** lose the keys. In the event of power outage two AAA batteries will last about 9 months.
- **DO NOT** place or store the backup keys inside the safe at any time.
- **DO NOT** store loaded guns in this unit. Firearms are serious in nature and must be handled with respect. Store responsibly.
- Keep this product away from small children as the package contains small items that could become a choking hazard.

Quick Setup / Tutorials / Online Help  
[vaulteksafe.com/support](http://vaulteksafe.com/support) and select your model

## AT A GLANCE

The Vaultek® DS2e Smart Station™ is a tough and rugged quick access safe. Its solid structure and penetration resistant design makes it ideal for storing valuables such as firearms, jewelry, cash and other personal items. The safe combines high security with complete access control.



- |                        |                            |
|------------------------|----------------------------|
| 1. LED Clock Display   | 6. AC Adapter              |
| 2. Control Panel       | 7. Standard USB Port       |
| 3. Smart Sense™ Keypad | 8. USB-C Port              |
| 4. Status LED          | 9. Manual Key Entry        |
| 5. Battery Indicator   | 10. Security Cable Release |

**Plug In Required:** Your safe is powered by the AC power adapter and needs to be plugged in continuously for normal function.

**Backup Battery Required:** Your safe has backup power via two AAA batteries (not included) and needs them for normal function.

**Keypad:** Touch-sensitive design that responds to simple taps.

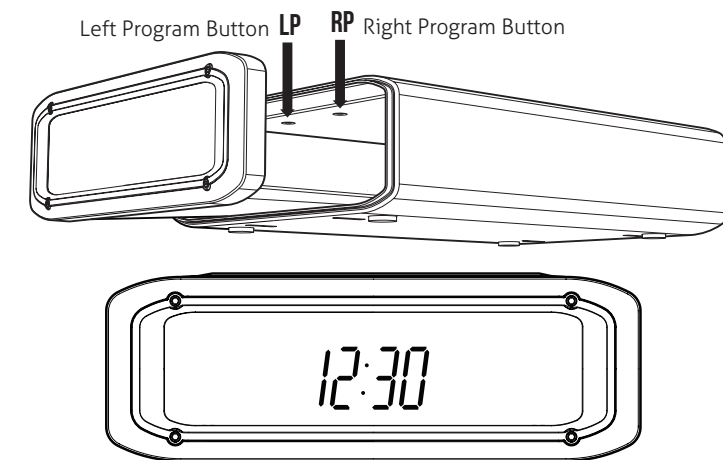
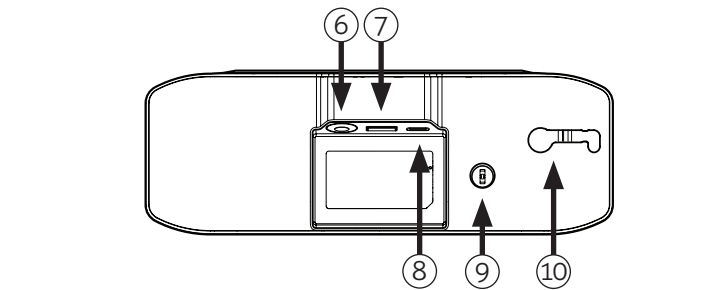
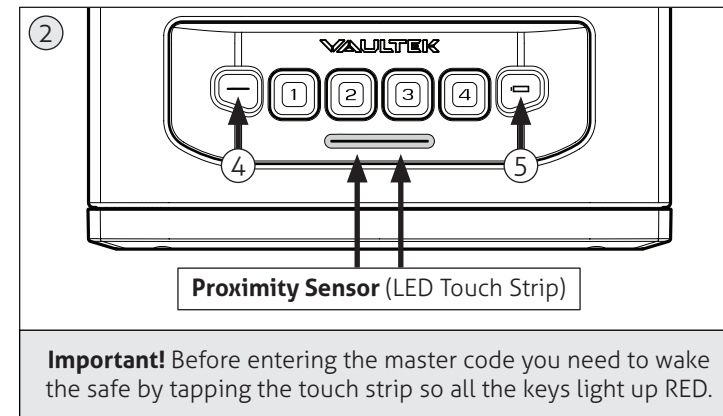
**Key:** Two keys are provided for manual access to the safe.

**Open Door Alarm:** The safe will beep and the status LED will flash RED when the safe door is left open for more than 8 minutes. This will continue until the safe door is closed.

**Low Battery Warning:** The battery indicator will flash RED and sound several rapid beeps. This continues every 5 minutes until the battery dies to indicate the battery is in need of replacement.

**Tamper Warning:** Tap the touch strip to see if tampering has occurred. If an incorrect keypad entry has been made the status LED will glow RED. You can reset the tamper detection by opening the safe through one of the authorized entry points.

**Security Sleep Mode:** Activates when six (6) consecutive incorrect keypad entries are made. The safe will not accept any entries for four minutes. If any additional attempts are made the alarm will beep. The backup manual keys can be used to open the safe when in security sleep mode.



**Setting the Display Clock:** The clock needs to be set from the safe. Refer to "Set the Clock" portion of this manual on the back.

**Enable/Disable the Clock:** (ON by Default) You can disable the clock by pressing and holding keys '1' and '4' together.

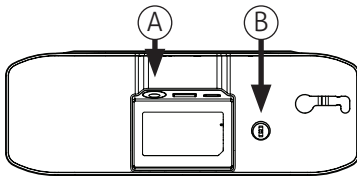
**Visit our mobile-friendly online guide.** Includes tutorial videos at [vaulteksafe.com/support](http://vaulteksafe.com/support) and select your model.

## POWER

This safe needs to be plugged in continuously for normal function and two AAA batteries need to be installed. These batteries provide backup power in the event of a power outage and will provide power for about 9 months to access to the safe.

### Plug In Required

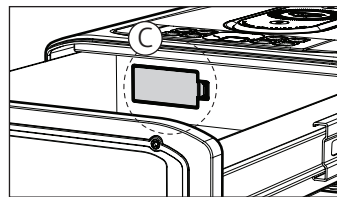
1. Plug in the safe using the included power adapter (A).



### Backup Batteries Required

1. Open the safe. Key entry is located at back of the safe (B).

2. Locate the battery cover inside the back of the safe drawer, and remove the cover (C).



3. Install two AAA batteries.

**Important!** Rechargeable batteries can be used, but they will not charge inside the safe. Rechargeable batteries must be charged separately.

## SET THE CLOCK

The clock can be set from the safe using the steps below.

### Setting the clock to either 12 hours or 24 hours.

1. First wake the safe by tapping the LED touch strip. Then press and hold keys '2' and '4' together to toggle between a 12 hour standard clock and 24 hour military clock.

### Setting the time.

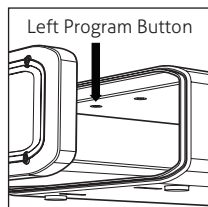
1. Press and hold the "Left Program Button" (located inside the safe) until the status LED flashes GREEN and the hours on the clock start flashing. You can now set the hours.

2. Tap the "Left Program Button" to toggle through the hours.

3. Once you set the right hour wait until the minutes start flashing to begin setting the minutes.

4. Tap the "Left Program Button" to toggle through the minutes.

5. Once you set the right minutes wait until the safe beeps and the clock is solid RED. You have successfully set the clock.



## PROGRAMMING MASTER CODE

### Programming Tips!

- Your code can be a minimum of 4 and a maximum of 8 digits. We recommend a code 6 to 8 digits in length.
- Avoid easy-to-guess digits such as 1234, 1111, 2222, etc.
- Two keys cannot be pressed simultaneously.
- Programming a new code will overwrite your previous code.
- Default master code is 1-2-3-4 on the keypad.

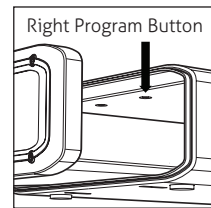
1. Open the safe. Press and hold the "Right Program Button" (located inside the safe) (3 seconds) until all keys (1-4) light up RED and let go.

2. Enter your NEW master code.

3. Immediately press and hold the "Right Program Button" a second time (3 seconds) until all keys (1-4) light up RED and let go.

4. Enter your NEW master code a second time.

5. Immediately press and hold the "Right Program Button" a third time (3 seconds) until the keypad flashes GREEN and let go. This indicates the master code has been successfully programmed.



## STEEL SECURITY CABLE

Included is a security cable to attach your safe to larger stationary objects.

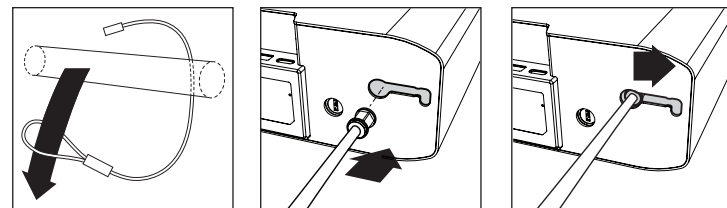
1. Loop the security cable around a secured object. Run the end of the cable through the eye of the other end and pull tight around the object.

2. Open safe drawer, and insert the clamped end of the security cable into the rear slot.

3. Slide the cable end all the way to the opposite side.

4. Shut the safe drawer to lock the security cable in place.

**Tip!** The security cable can only be inserted and removed while the safe drawer is open.



## HOT KEYS

Your safe has a list of available settings that can be changed from the safe.

### Clock (ON by Default)

To set the clock refer to "Set the Clock" portion of this manual. The clock is ON by default. To disable, wake the safe first by tapping the LED touch strip. When the safe is awake press and hold keys '1' and '4' together.

### Sound (ON by default)

Toggle between ON or OFF. First wake the safe by tapping the LED touch strip. When the safe is awake press and hold keys '1' and '3' together. The status LED will flash RED indicating OFF or GREEN indicating ON.

### Factory Reset

The Factory Reset erases all programmed information and restores the safe to its default settings. This includes resetting the master code to 1-2-3-4. Before you perform a Factory Reset make sure the safe is plugged in. To perform a factory reset, press and hold "Left Program Button" and "Right Program Button" together until the keypad flashes GREEN and the safe restarts.

## FREQUENTLY ASKED QUESTIONS

If you have any questions about your Vaultek® safe or need help configuring the system, we encourage you to visit [www.vaulteksafe.com/support/](http://www.vaulteksafe.com/support/) and select your model for troubleshooting, FAQs, and helpful videos. You can also email us at [support@vaulteksafe.com](mailto:support@vaulteksafe.com).

**The keypad is flashing and the safe is beeping. What does that mean?** The safe is alerting you to change the master code from the default code of 1-2-3-4.

**How to disable the sound?** First wake the safe by tapping the LED touch strip. When the safe is awake press and hold key '1' and '3' together. The status LED will flash RED for OFF or GREEN for ON.

**What kind of battery does the safe use?** Two AAA batteries. Rechargeable batteries can be used, but they will not charge inside the safe. Rechargeable batteries must be charged separately.

**Can rechargeable batteries be used?** Rechargeable batteries can be used, but they will not charge inside the safe. Rechargeable batteries must be charged separately.

**What happens if the safe is unplugged?** If the safe is unplugged the backup battery power will kick on and the screen will turn OFF to preserve battery life. Two AAA batteries need to be installed.

## PRODUCT REGISTRATION

Vaultek strongly encourages you to register your safe as soon as you receive it. **Registration provides many benefits including three year warranty, technical support and ordering replacement keys should you misplace them.** Your Vaultek safe has a unique product number located in several places: on the side of the battery compartment and on the front of this manual. There is also a unique ID number engraved on the keys. You will need these numbers to register your safe.

1. Please visit the Vaultek website at [vaulteksafe.com](http://vaulteksafe.com) and click Support/Product Registration and enter the required information.

## SUPPORT

If you have any questions about your Vaultek® safe or need help configuring the system, we encourage you to visit [www.vaulteksafe.com/support/](http://www.vaulteksafe.com/support/) and select your model for troubleshooting, FAQs, and helpful videos. You can also email us at [support@vaulteksafe.com](mailto:support@vaulteksafe.com).

**Visit our mobile-friendly online guide.** Includes tutorial videos at [vaulteksafe.com/support](http://vaulteksafe.com/support) and select your model.

## FCC

REV 091124

The device complies with part 15 of the FCC rules. Operation is subject to the following two conditions:

(1) this device may not cause harmful interference, and

(2) this device must accept any interference received, including interference that may cause undesired operation.

NOTE: The manufacturer is not responsible for any radio or TV interference caused by unauthorized modifications or changes to this equipment. Such modifications or changes could void the user's authority to operate the equipment.

**Stop!** Do not return to retailer. If you have any questions about your Vaultek safe or need help configuring the system, please visit [vaulteksafe.com/support](http://vaulteksafe.com/support) and select your model. You can also email us at [support@vaulteksafe.com](mailto:support@vaulteksafe.com).