



SLIDER SERIES

ViSN Model NSL2i

Instructions + Quick Setup Guide

QUICK SETUP GUIDE

Follow these steps to get your safe up and running.

Step 1: Remove the Mounting Plate.

Step 2: Plug in the safe and install four AAA batteries.

This safe needs to be plugged in continuously for normal function and four AAA batteries need to be installed. These batteries provide backup power in the event of a power outage and will provide power for about 3 months allowing quick access to the safe.

Step 3: Setup your safe with Vaultek® ViSN™ smartphone app.

Using the Vaultek ViSN smartphone app, you can program your safe, customize safe settings, and receive live alerts of critical safe activity from anywhere around the world.

Step 4: Program the Master Code and Biometric Scanner.

The ViSN smartphone app will guide you through programming.

Step 5: Register the safe.

Registration provides many benefits including three year warranty, technical support, and ordering replacement keys should you misplace them.

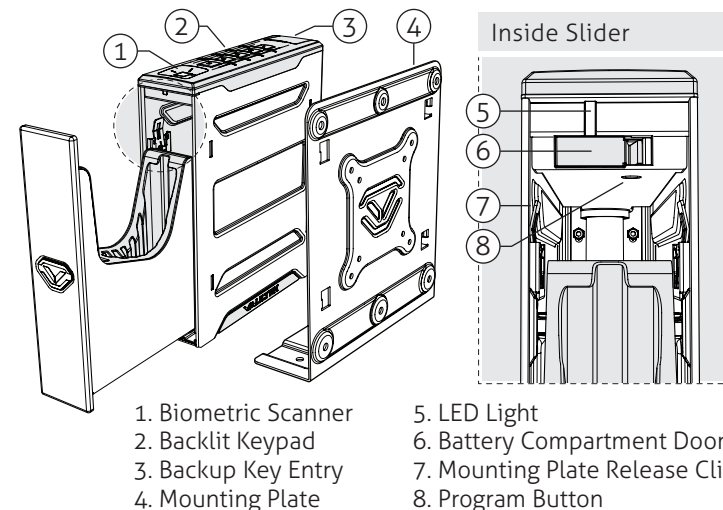
WARNINGS

To prevent damage to your Vaultek® unit or injury to yourself or to others, read the following safety precautions before using this unit.

- **Before using this safe,** inspect the safe to make sure the door latches properly. You can perform a quick test by using the included mechanical key. Open and close the safe 5 times. Do not use the product if you notice any problem or defect. Please email Vaultek customer support at support@vaulteksafe.com.
- **Always check to make sure the safe door has latched when closing.** This safe uses a rugged latch system. When closing press firmly near the center of the front door. Door requires a firm press and will lock automatically when closed properly.
- **Change the default code as soon as possible to prevent unauthorized access to your safe.**
- **DO NOT** lose the keys. In the event of power outage four AAA batteries will last about 3 months.
- **DO NOT** place or store the backup keys inside the safe at any time.
- **DO NOT** store loaded guns in this unit. Firearms are serious in nature and must be handled with respect. Store responsibly.
- Keep this product away from small children as the package contains small items that could become a choking hazard.

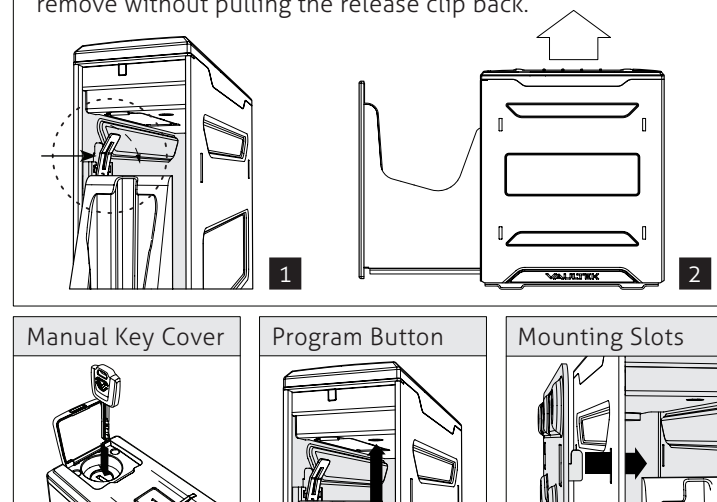
AT A GLANCE

The Vaultek® Slider Series model NSL2i is a tough and rugged, quick access, Wi-Fi enabled smart safe. Its solid structure and penetration resistant design makes it ideal for quick firearm access. Powered by the AC power adapter, and backup batteries, the safe combines high security with complete access control.



How to Remove Safe from the Mounting Plate

1. Open the safe. Locate the release clip on the same side as the attached mounting plate.
2. Use your thumb or finger to pull the release clip back, and lift the safe off the mount at the same time. The safe will not remove without pulling the release clip back.



SET UP YOUR SAFE WITH ViSN™

The Vaultek ViSN smartphone app guides you step by step through programming your safe and gives you access to advanced features not possible with the keypad alone. Combined with the web dashboard, you'll have complete control and enhanced functionality at your fingertips.

Program the Master Code and Biometric Scanner: Step by step programming instructions via the ViSN smartphone app.

Live Alerts: Receive real time alerts of critical safe activity.

Customize Safe Settings: Interior Light Brightness, Sound Levels, Alert Preferences, and more from the ViSN smartphone app.

1. Smartphone App: Download the Vaultek ViSN smartphone app from Google Play or the Apple Store. Open the app and follow the on-screen prompts.

Web Dashboard: Go to www.visn.vaulteksafe.com. Safe programming not available with the ViSN web dashboard.

Need help? Visit vaulteksafe.com/support and select your model for troubleshooting and other helpful information. You can also email our support team at support@vaulteksafe.com.

Online Support, Tutorials, and Vaultek® ViSN™

Scan QR code with your phones camera or visit vaulteksafe.com/support and select your model.



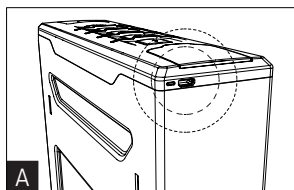
POWER

This Slider Series ViSN safes needs to be plugged in continuously for normal function and four AAA batteries need to be installed.

In the event of a power outage, the safe will switch to Low Power Mode and the backup battery will last about 3 months in this mode. The safe will go online only when the safe is awake, and offline when in standby. During standby, Nano Key is NOT supported.

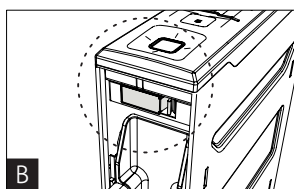
Plug In Required

1. Plug in the safe using the included power adapter (A).



Backup Batteries Required

1. Open the safe. Key entry is located at back of the safe.



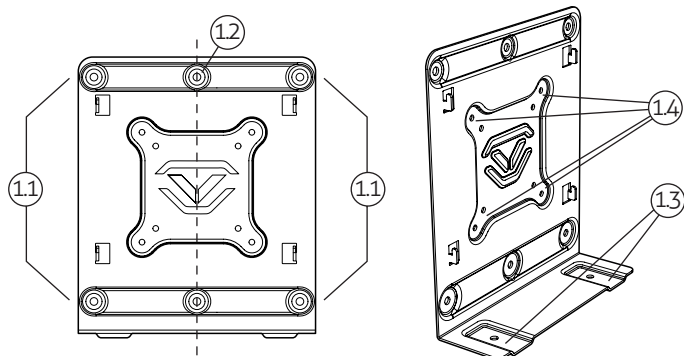
2. Remove the battery compartment. Press the tab near the right of the compartment, allowing the battery compartment to slide out (B).

3. Install four AAA batteries (B). For optimal performance, we recommend Duracell/Energizer or other reputable brands.

MOUNTING PLATE OVERVIEW

Your Vaultek safe can be secured to vertical surface via the included mounting plate and hardware.

There are multiple configurations for mounting. A four point configuration can be used for standard vertical surface mounting (1.1), two point mounting for installing in a vertical wall stud (1.2), and additional base mounts (1.3). The mounting plate also features standard VESA 75mm and 100mm fitment for use with other adapter plates (1.4). Hardware for VESA fitment not included.



PROGRAMMING

Using the Vaultek ViSN smartphone app, you can program your safe with guided step by step instructions.

- Master Code Programming
- Biometric Scanner Programming
- Nano Key Programming

1. Smartphone App: Download the Vaultek ViSN smartphone app from Google Play or the Apple Store. Open the app and follow the on-screen prompts.

Essential Mode: If you don't want to use Wi-Fi connectivity via ViSN you can place the safe in Essential Mode. This mode allows the safe to be programmed as a standalone safe including the master code and biometric scanner without the need for Wi-Fi connectivity. Wi-Fi features from ViSN and Nano Key are not supported in Essential Mode. Reference the "Essential Mode Hotkeys" section of this manual for further details.

Register your safe. Registration provides many benefits including three year warranty, technical support, and ordering replacement keys should you misplace them. Visit the online support at vaulteksafe.com/support and select your model.

SECURING THE MOUNTING PLATE

Tip! Your safe can install on the mounting plate from the left or right side.

Important! When installing the plate, be sure the bottom is parallel to the floor (E) so the safe opens horizontally. Angling the plate or aiming the safe downwards can affect the rail mechanics and prevent safe from opening correctly.

1. Locate mounting surface, making sure the safe will have enough clearance to open properly prior to installing.

2. Hold mounting plate in place and use a pencil to mark desired hole locations. Drill 7/32" inch pilot holes.

3. Using hardware provided fasten mounting plate in place and tighten firmly.

Visit our mobile-friendly online guide. Includes tutorial videos at vaulteksafe.com/support and select your model.

KEYPAD HOTKEYS

Your Slider Series ViSN safe has settings which are accessible using the keypad hotkeys and Vaultek ViSN smartphone app.

Tamper Detection: Press and hold keys '2' and '4' together. The '3' key will glow RED to indicate tampering or GREEN to indicate no tampering. You can reset the tamper detection by opening the safe through one of the authorized entry points.

Battery Status: Press and hold the '5' key. Keys '1' to '4' will glow GREEN or RED to indicate the battery level.

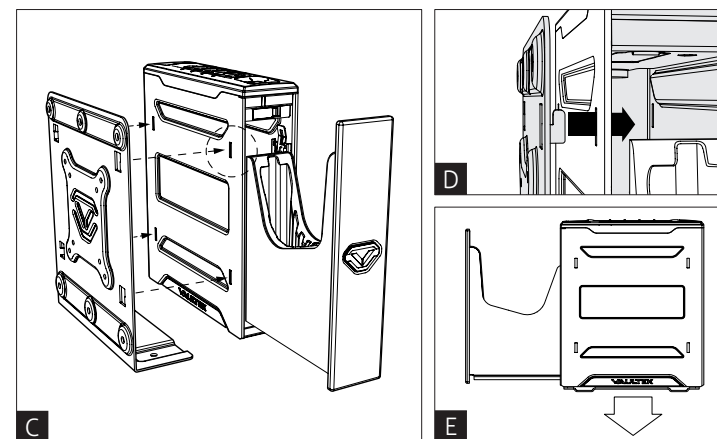
Sound (ON by Default): Press and hold '1' and '3' together. The keypad will toggle between the sound options; OFF, Low pitch, Medium pitch, and High pitch.

Factory Reset: Open the safe using the included key and leave the key turned all the way in the clockwise position. Press and hold keys '1' '5' and Program button together until the safe restarts. The factory reset will erase all programmed information and restores the safe to its factory default settings. This includes any network configurations. The master code is reset to 1-2-3-4-5, and the safe will restart. The safe's Wi-Fi will need to be configured again to enable all the ViSN features.

ATTACHING THE MOUNTING PLATE

1. Locate the 4 receiving slots located on the safe sides, and the 4 tabs located on the mounting plate.

2. Fully insert the tabs on the mounting plate into the receiving slots on the safe (C/D), and press the safe downwards to lock in place (E).



ESSENTIAL MODE HOTKEYS

Essential Mode has settings that are accessible using the keypad hotkeys only. In ViSN Mode, these same settings are accessible using the smartphone app.

Safe Mode (ViSN or Essential): By default your safe is in ViSN Mode. Press and hold the '5' key and Program button together until either the '1' key or '2' key turns solid GREEN. If the '1' key turns solid GREEN the safe is now in Essential mode. If the '2' key turns solid GREEN the safe is now in ViSN mode.

ViSN Modes allows you to connect your safe to Wi-Fi which gives you access and control over features that are not possible in Essential mode. In addition, to live alerts of critical safe activity. **Essential Mode** allows the safe to be programmed as a standalone safe without the need for Wi-Fi connectivity. Nano Key is not supported in Essential Mode.

Essential Mode Programming the Master Code and Biometric Scanner: Visit vaulteksafe.com/support and select your model for programming instructions. Nano Key is not supported in this mode.

Essential Mode Hotkeys: For the full list of keypad hotkeys such as Open Door Alarm visit vaulteksafe.com/support and select your model. You can also scan the QR code in this user manual.

FCC

REV 111224

This device has been evaluated to meet general RF exposure requirement, and this device can be used in portable exposure condition without restriction.

FCC statements:

This device complies with part 15 of the FCC rules. Operation is subject to the following two conditions: (1) this device may not cause harmful interference, and (2) this device must accept any interference received, including interference that may cause undesired operation.

NOTE: The manufacturer is not responsible for any radio or TV interference caused by unauthorized modifications or changes to this equipment. Such modifications or changes could void the user's authority to operate the equipment.

NOTE: This equipment has been tested and found to comply with the limits for a Class B digital device, pursuant to part 15 of the FCC Rules. These limits are designed to provide reasonable protection against harmful interference in a residential installation. This equipment generates uses and can radiate radio frequency energy and, if not installed and used in accordance with the instructions, may cause harmful interference to radio communications. However, there is no guarantee that interference will not occur in a particular installation. If this equipment does cause harmful interference to radio or television reception, which can be determined by turning the equipment off and on, the user is encouraged to try to correct the interference by one or more of the following measures:

- Reorient or relocate the receiving antenna.
- Increase the separation between the equipment and receiver.
- Connect the equipment into an outlet on a circuit different from that to which the receiver is connected.
- Consult the dealer or an experienced radio/TV technician for help.