



SLIDER Series

Model SL2i

Instructions + Quick Setup Guide



SUPPORT RESOURCE

Online Support, Tutorials, and Troubleshooting

Scan QR code with your phones camera or visit
vaulteksafe.com/support and select your model.

DISCLAIMER: NEITHER SELLER NOR MANUFACTURER SHALL BE LIABLE FOR UNAUTHORIZED ACCESS, ANY INJURY, LOSS OR DAMAGE TO PERSONAL PROPERTY DIRECT OR CONSEQUENTIAL, ARISING OUT OF THE USE OF, OR THE INABILITY TO USE THE VAULTEK® SAFE. THE USER SHALL DETERMINE THE SUITABILITY OF THE VAULTEK® SAFE BEFORE THE INTENDED USE AND USER ASSUMES ALL RISK AND LIABILITY WHATSOEVER IN CONNECTION THEREWITH. VAULTEK® SAFES ARE NOT INTENDED TO PROTECT AGAINST ENVIRONMENTAL HAZARDS INCLUDING FIRE AND WATER.

Vaultek Safe Inc. | 1150 Emma Oaks Trail Suite 120, Lake Mary, FL 32746
Email: support@vaulteksafe.com | Online Support: vaulteksafe.com/support

QUICK SETUP GUIDE

Follow these steps to get your safe up and running.

Step 1: Remove the Mounting Plate.

Step 2: Install Four AAA Alkaline Batteries. (Not Included)

This safe uses four AAA Alkaline batteries and can be left plugged in continuously. Under normal usage, brand new batteries can last about 1 year.

If the safe is left opened for more than 10 minutes. The Open Door Alarm will sound (ON by Default). See backside more information.

Step 3: Program the Master Code.

First time users should change the default code as soon as possible to prevent unauthorized access to your safe, so it should be kept confidential.

Step 4: Program the Biometric Scanner.

Personalized access for up to 20 fingerprints.

Step 5: Register your Safe.

Registration provides many benefits including three year warranty, technical support, and ordering replacement keys should you misplace them.

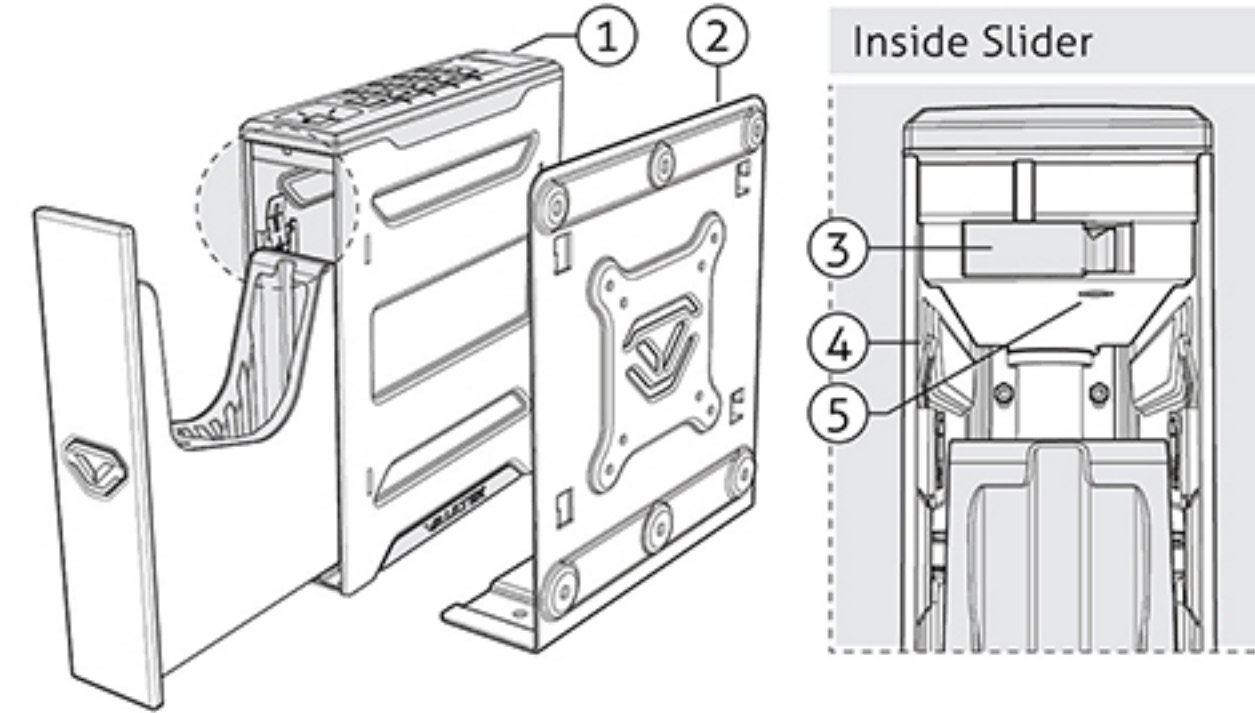
WARNINGS

To prevent damage to your Vaultek® unit or injury to yourself or to others, read the following safety precautions before using this unit.

- **Before using this safe,** inspect the safe to make sure the door latches properly. You can perform a quick test by using the included mechanical key. Open and close the safe 5 times. Do not use the product if you notice any problem or defect. Please email Vaultek customer support at support@vaulteksafe.com.
- **Always check to make sure the safe door has latched when closing.** This safe uses a rugged latch system. When closing press firmly near the center of the front door. Door requires a firm press and will lock automatically when closed properly.
- **Change the default code as soon as possible to prevent unauthorized access to your safe.**
- **DO NOT** lose the keys.
- **DO NOT** place or store the backup keys inside the safe at any time.
- **DO NOT** store loaded guns in this unit. Firearms are serious in nature and must be handled with respect. Store responsibly.
- **DO NOT** lose the keys. The included keys are used to perform various functions such as performing a factory reset.
- Keep this product away from small children as the package contains small items that could become a choking hazard.

AT A GLANCE

The Vaultek® Slider Series safe model SL2i is a tough and rugged, quick access biometric safe. Its solid structure and penetration resistant design makes it ideal for quick firearm access. Powered by four AAA Alkaline batteries, and optional plug-in power, the safe combines high security with complete access control.



1. Manual Keyhole Cover
2. Mounting Plate

3. Battery Compartment Door
4. Mounting Plate Release Clip
5. Program Button

Battery Power: This safe has battery power via four AAA Alkaline batteries (not included) and needs them for normal function. Under normal usage, brand new batteries can last about 1 year.

Optional Plug-In Power: This safe can be plugged into a power source for continuous power using a USB-C cable (not included). Great in the event you lose the keys and the battery dies.

Low Battery Warning: If the '1' key on the keypad blinks RED several times and you hear several rapid beeps when opening the safe, your battery level is critically low and needs to be replaced.

Smart Sense™ Keypad: The numeric keypad responds quickly for rapid access and has a built-in proximity sensor that lights up when your hand brushes against the safe.

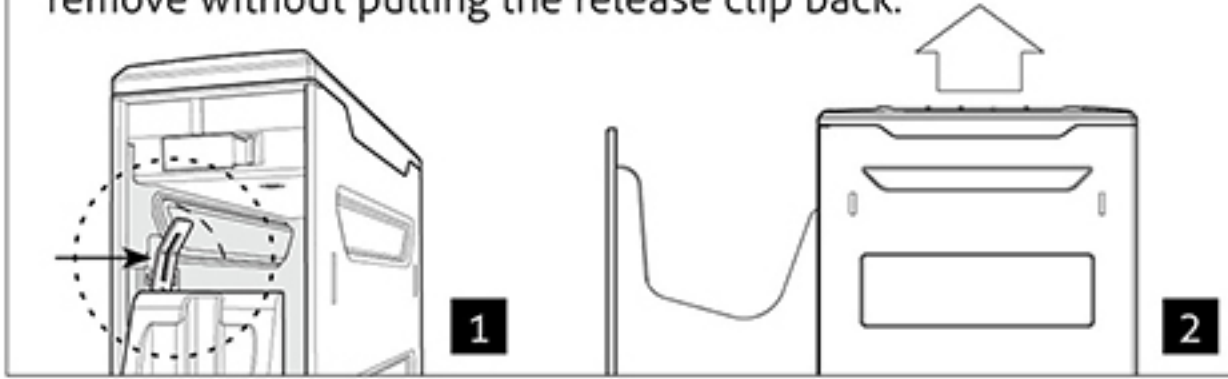
Biometric Scanner: Personalized access for up to 20 fingerprints. The first and second are Admin prints used to program prints 3 to 20.

Key: Two keys are provided for manual access to the safe.

Security Sleep Mode: Activates when six (6) consecutive incorrect keypad entries are entered or (6) incorrect fingerprint scans are made. The safe will not accept any entries for four minutes. If any additional attempts are made the alarm will beep. The security sleep mode can be cleared upon unlock of the safe by any authorized access method including the backup keys.

Removing the Mounting Plate from the Safe

1. Open the safe. Locate the release clip on the same side as the attached mounting plate.
2. Use your thumb or finger to pull the release clip back, and lift the safe off the mount at the same time. The safe will not remove without pulling the release clip back.

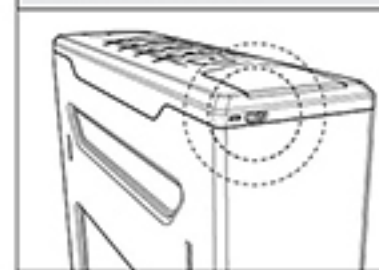


If the safe is left opened for more than 10 minutes. The Open Door Alarm will sound. See backside more information.

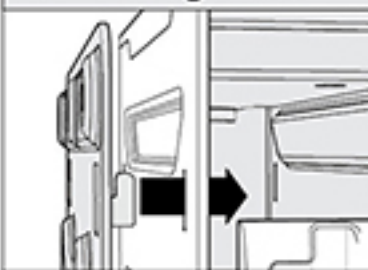
Manual Key Cover



Power Port



Mounting Slots

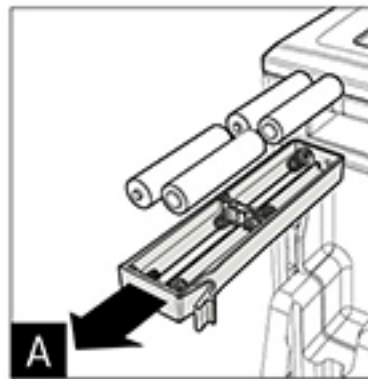


POWER

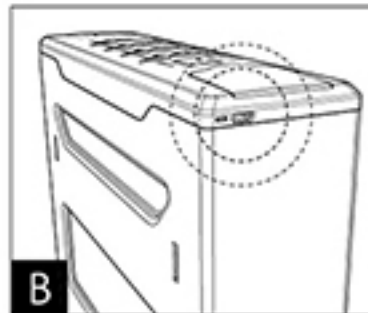
This safe is powered by four AAA Alkaline batteries that need to be installed. Under normal usage, brand new batteries can last about 1 year. The included backup keys can be used at any time.

Battery Power

1. Open the safe. Key entry is located at back of the safe under the key cover.
2. Remove the battery compartment. Press the tab near the right of the compartment, allowing the battery compartment to slide out (A).



3. Install four AAA Alkaline batteries (A). For optimal performance, we recommend Duracell/Energizer or other reputable brands.



Optional Plug-In Power

Tip! The event you lose the keys and the battery dies, plug-in the safe to a power source.

1. Plug-in the safe to a power source using a USB-C cable (not included) (B). This provides continuous power.

KEYPAD HOTKEYS

This safe has a set of settings accessible from the keypad hotkeys.

Sound (Medium by Default): To toggle the sound press and hold keys '1' and '3' together for 3 seconds.

If '2' glows red: OFF

If '2' glows green: Low

If '2' and '4' glow green: Medium

If '2' '4' and '5' glow green: High

Interior Light Duration (10 Seconds by Default): To set the interior light duration press and hold keys '3' and '5' then "Program Button" together for 3 seconds.

If '1' glows green: 10 seconds

If '1' and '2' glow green: 30 seconds

If '1' '2' and '4' glow green: 60 seconds

If '1' '2' and '4' glow red: OFF

Dual Entry Mode (OFF by Default): If toggled ON, you will be required to enter your master code and fingerprint (and vice versa) to open the safe. This mode requires that at least one fingerprint be programmed in the safe and change the default master code before use. To toggle Dual Entry ON/OFF press and hold the '4' key then "Program Button" together for 3 seconds. The keypad will glow GREEN indicating this feature is ON or RED indicating OFF.

Open Door Alarm (ON by Default): This safe features an open door alarm that will sound when the safe door is left open for more than 10 minutes. To toggle press and hold keys '3' and '4' then "Program Button" together for 3 seconds. The keypad will glow GREEN indicating this feature is ON or RED indicating OFF.

Unauthorized Access Alarm (ON by Default): If enabled and someone opens the safe by picking the lock, the keypad will start flashing RED and beep for 8 seconds. To toggle press and hold keys '2' and '3' then "Program Button" together for 3 seconds. The keypad will glow GREEN indicating this feature is ON or RED indicating OFF. If ON and activated it can only be cleared by any authorized access method including the backup keys.

Battery Status: Press and hold the '5' key for 3 seconds. Keys '1' to '4' will glow GREEN or RED to indicate the battery level.

Tamper Detection: Press and hold keys '2' and '4' together for 3 seconds. The '3' key will glow RED to indicate tampering or GREEN to indicate no tampering. You can reset the tamper detection by opening the safe through one of the authorized entry points.

Factory Reset: Open the safe using the included key and leave the key turned all the way in the clockwise position. Press and hold keys '1' and '5' then "Program Button" together until the safe restarts. The factory reset will erase all programmed information and restores the safe to its factory default settings. The master code is reset to 1-2-3-4-5, and the safe will restart.

MASTER CODE PROGRAMMING

Programming Tips!

- Your code can be a minimum of 4 and a maximum of 8 digits. We recommend a code 6 to 8 digits in length.
- Avoid easy-to-guess digits such as 1234, 1111, 2222, etc.
- Two keys cannot be pressed simultaneously.
- Programming a new code will overwrite your previous code.
- Default master code is 1-2-3-4-5 on the keypad.

1. Open the safe. Press and hold the '1' key and "Program Button" together (3 seconds) until all keys (1-5) light up RED and let go.

2. Enter your NEW master code.

3. Immediately press and hold the '1' key and "Program Button" together a second time (3 seconds) until all keys (1-5) light up RED and let go.

4. Enter your NEW master code a second time.

5. Immediately press and hold the '1' key and "Program Button" a third time (3 seconds) until the keypad flashes GREEN and let go. This indicates the master code has been successfully programmed.

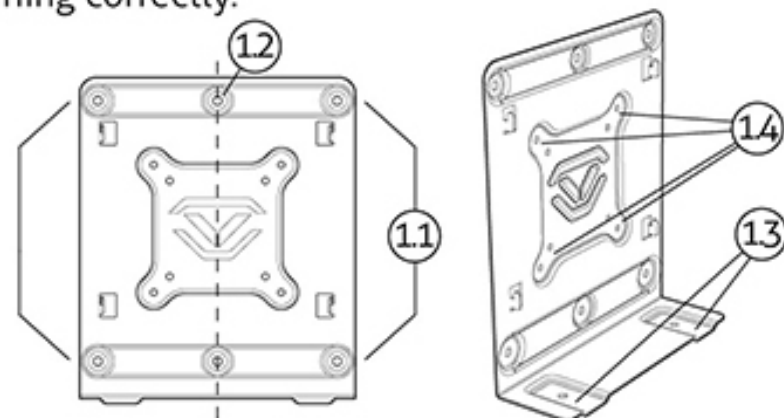
Repeat these steps to change the master code.

MOUNTING PLATE

This safe can be secured to vertical surface via the included mounting plate and hardware.

There are multiple configurations for mounting. A four point configuration can be used for standard vertical surface mounting (1.1), two point mounting for installing in a vertical wall stud (1.2), and additional base mounts (1.3). The mounting plate also features standard VESA 75mm and 100mm fitment for use with other adapter plates (1.4). Hardware for VESA fitment not included.

When installing the plate, be sure the bottom is parallel to the floor so the safe opens horizontally. Angling the plate or aiming the safe downwards can affect the rail mechanics and prevent safe from opening correctly.

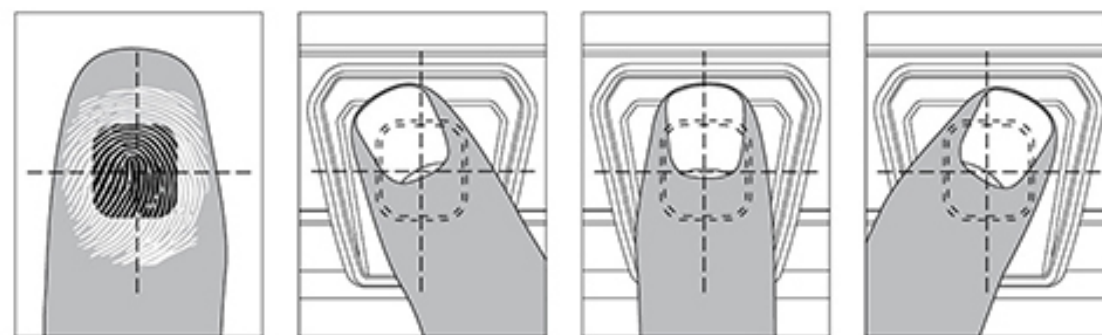


BIOMETRIC SCANNER PROGRAMMING

This safe is capable of storing fingerprint data for up to 20 unique authorized users. The 1st and 2nd fingerprints will be recognized as administrative fingerprints and will be used to authorize additional users 3 to 20. Each fingerprint requires 5 registration scans to be enrolled into the safe.

Programming Tips!

- Place the core of the fingerprint flat over the center of the scanner (this allows the scanner to read where most of the fingerprint detail is located).
- Rotate your finger slightly between registration scans to store print variations for increased accuracy.
- Excessive moisture, lotions, or dirt will affect your fingerprint and may cause inaccurate sensor reading.



Programming Admin Print 1

1. Open the safe. Program 1st fingerprint by pressing and holding the '2' key and "Program Button" together. The LED ring around the scanner will turn solid RED and the '1' key will start blinking RED.

2. Using the programming tips below place your finger on the fingerprint scanner for the 1st of 5 scans. When the safe beeps and the '1' key lights up GREEN remove your finger.

3. Rotate your finger position and place your finger on the scanner again. You will repeat this process until all keys are solid GREEN.

Troubleshooting! If the LED around the scanner is YELLOW then refer to programming additional prints 3-20.

Troubleshooting! If you are having difficulty with your print, program the same fingerprint 4 or 5 times. You have 20 slots available for programming and you can also try your thumb as it has more surface area to read.

Programming Admin Print 2

1. Repeat the above steps to add the 2nd administrative fingerprint.

To program additional fingerprints 3 to 20 reference the next section.

REV 121725

Programming Additional Prints 3 to 20

The first two fingerprints programmed into the safe are the administrative fingerprints. Any additional users programmed require authorization from one of these fingerprints.

1. Open the safe. Program additional fingerprints by pressing the '2' key and "Program Button" together (3 seconds). The LED around the scanner will be solid YELLOW prompting you to scan one of the admin fingerprints.

2. Place either of the first two programmed administrative fingerprints on the scanner and remove when the safe beeps and the scanner blinks GREEN. When the '1' key starts blinking RED you can enroll a NEW fingerprint.

3. Place the NEW finger on the scanner. When the safe beeps and the '1' key lights up GREEN, remove your finger.

4. Place finger again over the scanner until the safe beeps and the '2' key lights up GREEN and lift. You will repeat this process until all keys are solid GREEN.

Tip! Repeat steps 1-4 to continue adding additional prints.

Delete Fingerprints: This will delete all prints stored in the safe. Press and hold the '3' key and "Program Button" together for 3 seconds then enter the master code. The keypad will blink GREEN indicating deletion of all the fingerprints.

FCC This device complies with part 15 of the FCC rules. Operation is subject to the following two conditions:

(1) this device may not cause harmful interference, and

(2) this device must accept any interference received, including interference that may cause undesired operation.

NOTE: The manufacturer is not responsible for any radio or TV interference caused by unauthorized modifications or changes to this equipment. Such modifications or changes could void the user's authority to operate the equipment.

Note: This equipment has been tested and found to comply with the limits for a Class B digital device, pursuant to part 15 of the FCC Rules. These limits are designed to provide reasonable protection against harmful interference in a residential installation. This equipment generates, uses and can radiate radio frequency energy and, if not installed and used in accordance with the instructions, may cause harmful interference to radio communications. However, there is no guarantee that interference will not occur in a particular installation. If this equipment does cause harmful interference to radio or television reception, which can be determined by turning the equipment off and on, the user is encouraged to try to correct the interference by one or more of the following measures:

—Reorient or relocate the receiving antenna.

—Increase the separation between the equipment and receiver.

—Connect the equipment into an outlet on a circuit different from that to which the receiver is connected.

—Consult the dealer or an experienced radio/TV technician for help.